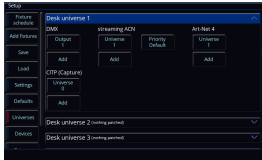


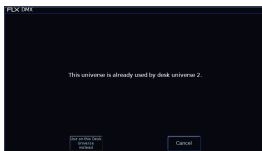
Below the various protocol settings within the Universes tab, is a panel for each of the console's 64 "Desk Universes".

The 64 Desk Universe panels provide a method of fine tuning your outputs (for example, you could send the data for fixtures patched to "Desk Universe 5" to sACN Universe 5, Art-Net Universe 4 and DMX Output 1).



Within each Desk Universe panel, you can configure the four different control protocols for that desk universe – DMX, streaming ACN, Art-Net 4, and CTP (Capture).

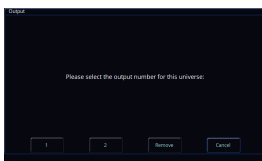
For each of the control protocols within a Desk Universe, an **Add** button allows you to add another universe of that protocol. For example, you could have Desk Universe 1 being output to both Art-Net Universe 1 and 2 (or more). This might be useful when visiting a venue that uses Ethernet to DMX gateways, as you can have the same data from both Art-Net ports without having to reconfigure the venue's gateway.



If you add a protocol universe to a desk universe, which is already in use by another desk universe, you will receive a popup with the option to Cancel, or Use on this Desk Universe instead.

DMX

To edit which DMX Output port a Desk Universe is being sent from, click on the **Output** button below DMX in the required Desk Universe, or click **Add** to add another.



You can then choose which physical output port you wish this Desk Universe to be routed from. FLX series consoles have a pair of DMX outputs on the rear of the console.

You can also Remove the DMX output from this Desk Universe.

streaming ACN

To edit which streaming ACN universe a Desk Universe is being sent on, click on the **Output** button below streaming ACN in the required Desk Universe, or click **Add** to add another.



You can choose to send DMX data on any streaming ACN universe from 1 to 63,999.

You can also Remove streaming ACN universes from this Desk Universe.

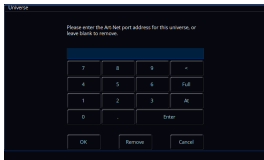
Each sACN Universe has the option to set a custom priority, which is a value from 0 to 200. streaming ACN receivers will listen to the controller that has the highest priority value for the universe they are set to receive.



To change a streaming ACN universe's priority, press "Priority" and either enter the new number, or click "Default". Clicking default means this universe will then use the default streaming ACN priority value set in the global streaming ACN settings at the top of the Universes tab of Setup.

Art-Net 4

To edit which Art-Net universe a Desk Universe is being sent on, click on the **Output** button below Art-Net 4 in the required Desk Universe, or click **Add** to add another.



You can choose to send DMX data on any Art-Net 4 universe from 0 to 32,767. It is recommended to avoid using Art-Net universe 0 if you can, and start with Art-Net universe 1, to avoid any offset confusion.

You can also Remove Art-Net universes from this Desk Universe.

CITP

To edit which CITP universe a Desk Universe is being sent on, click on the **Output** button below CITP in the required Desk Universe, or click **Add** to add another.



You can choose to send DMX data on any CITP universe from 0 to 255.

You can also Remove CITP universes from this Desk Universe.