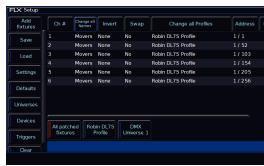


Fixture Schedule



The fixture schedule, lists all of the fixtures currently in your show, and allows you to edit them in various ways. The fixture schedule is automatically displayed after patching fixtures, and is the first window that opens upon tapping Setup, which opens ZerOS Setup.

[For more information on the Fixture Schedule, click here to head to the Patching chapter.](#)