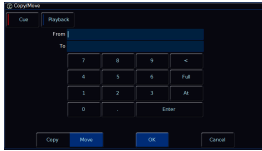
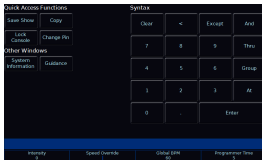


Individual cues, and whole playbacks, can be moved. Moving cues is useful to allow you to change the cue number, and therefore order, that your cues sit in the cue stack. Moving playbacks allows you to rearrange playbacks on your faders. For example, you may have multiple playbacks programmed, and when you need to use one, you could move it to the Master Playback.

To access the Move function, you can hold **[Shift]** and tap the **[Copy]** key.



Alternatively you can tap the Copy button, and then select Move from the Copy/Move window.



On FLX S consoles, the Copy button can be found by tapping the Z/Shift key.

Moving Playbacks

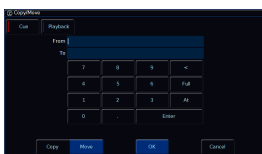
To move a playback, hold **[Shift]** and press the **[Copy]** button. Then, tap the flashing button of the playback you wish to move, and then tap the flashing button you wish to move the playback to.

Alternatively, after pressing **[Copy]** to open the Copy/Move window, you can choose **[Move]**, and then choose **[Playback]**. This allows you to then type the number of the playback you wish to move in the “from” field, and the number you would like this playback to become in the “to” field.

On FLX, pressing either Down or Enter will move to the next field. So the following syntax will allow you to move playbacks:

[Copy] **[Move]** **[Playback]** **[5]** **[Enter]** **[1]** **[0]** **[Enter]**

[Shift] - **[Copy]** Playback button 5, Playback button 10



Moving Cues in a Playback

To move a cue, hold Shift and tap the Copy button. Ensure Cue is selected in the window, which it should be by default. Then type the number of the cue you wish to move in the “from” field, and the number you wish to move it to in the “to” field. This will move cues from and to the currently viewed playback.

Moving Cues to Other Playbacks

To move a cue from one playback to another, press the playback's button after typing the cue number. Doing this moves onto the next field automatically.

For example, to Move Cue 7 from Playback 15 to cue 25 in playback 18, type 7 in the “from” field followed by pressing the button of playback 15, and then type 25 in the “to” field, followed by pressing the button of playback 18.

The from field would look like this:

15/7

For FLX users, pressing either Down or Enter will move to the next field. Therefore, FLX users can choose any of the following syntax to move a cue:

[Shift] - [Copy] [5] [Enter] [1] [0] [Enter]

This will move cue 5 to cue 10 within the playback you are currently viewing.

[Copy] [Move] [5] [Down Arrow] [1] [0] [OK]

This will move cue 5 to cue 10 within the playback you are currently viewing.

[Shift] - [Copy] [5] Playback button 10 [2] [0] [Enter]

This will move cue 5 from Playback 10 to cue 20 within the playback you are currently viewing.

[Shift] - [Copy] [7] Playback button 15 [2] [5] Playback button 18

This will move cue 7 from Playback 15 to cue 25 within Playback 18.

Moving Multiple Cues

To move multiple cues, FLX users can use the [And] and [Thru] keys to define the multiple cues in the “from” field. There is no need to do this in the “to” field.

[Shift] - [Copy] [5] [Thru] [1] [0] [Enter] [4] [7] [Enter]

This will move cues 5,6,7,8,9,10 to cues 47,48,49,50,51,52 within the playback you are currently viewing.

If a cue was missing, or there was a point cue, within the “from” range, these will be reproduced within the “to” range. So, in the example above, if cue 7 didn't exist, cue 49 would be left empty. If there was a cue 9.5, a cue 51.5 would be created.