

Searching & Filtering

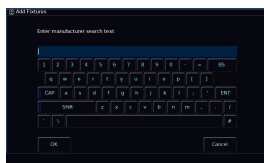


Add Fixtures gives you access to thousands of fixtures that are stored in the ZerOS Library. You therefore have the ability to search and filter the list of fixtures, to find the one you need.

Searching



Upon choosing Add Fixtures, the Search bar will be chosen. This allows you to use a USB keyboard to type in the fixture you are looking for.

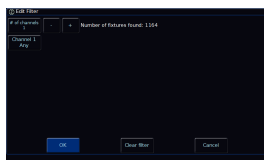


If you do not have a USB keyboard connected, simply tap ABC to bring up an onscreen keyboard.

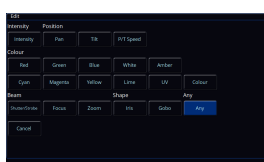
If you are on FLX, you can tap into one of the columns, and use the Up/Down arrow keys to navigate through the list. Hold **[Shift]** and tap the arrow keys to skip through the list. If you have a USB keyboard connected to your console, tap into one of the columns, and you can tap the first letter of the fixture you are looking for to take you there.

Filtering

Add Fixtures can also be filtered. Sometimes, you may not know the make or model of your fixture, but you might know how many DMX channels it uses, and what each DMX channel does. You can therefore add a filter, to show all fixtures in the library that have the same "DMX map" as the fixture you are trying to patch. To add a filter, click the **Add Filter** button bottom right of Add Fixtures.



This will open the Edit Filter window. This allows you to specify the number of DMX channels your fixture uses, either by clicking the "+" and "-" buttons, or by clicking the "# of channels" button.



Once you have specified the number of channels your fixture uses, you can then specify what each of those parameters is. To do this, tap a Channel button.

This will allow you to choose any of the following parameters:

Intensity Parameters:

- *Intensity*

Position Parameters:

- *Pan*
- *Tilt*
- *P/T Speed*

Colour Parameters:

- *Red*
- *Green*
- *Blue*
- *White*
- *Warm White*
- *Cool White*
- *Amber*
- *Cyan*
- *Magenta*
- *Yellow*
- *Lime*
- *UV*
- *Colour*

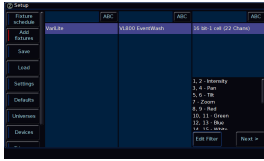
Beam Parameters:

- *Shutter/Strobe*
- *Focus*
- *Zoom*

Shape Parameters:

- *Iris*
- *Gobo*

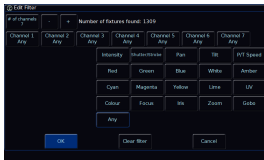
You don't have to specify each parameter. You just need to add enough parameters in, so that the "Number of fixtures found" is small enough to then choose one of the suitable fixtures to patch.



You can then click OK, to be taken back to Add Fixtures with the relevant fixtures shown. You can then click Next > to proceed with patching the fixture you have found.

To edit the filter, you can then click Edit Filter bottom right of Add Fixtures.

[If you cannot find a suitable alternative personality in Add Fixtures to control your fixture, click here](#)



To remove a filter, you can click "Clear Filter" in the Edit Filters window.

[Once you have found a fixture, it can be Edited & Exported. Click here to find out more.](#)