

Installation Instructions

LTC CONTROL MODULES

WARNING

ENSURE THE CABINET IS ISOLATED FROM THE MAINS SUPPLY BEFORE MAKING ANY CONNECTIONS OR REMOVING ANY COVERS.

- ◆ These modules must only be fitted by suitably qualified or trained personnel.
- ◆ Zero 88 is not liable for any damage caused by poor workmanship during installation or commissioning.
- ◆ Read all instructions before proceeding.

There are several options in control modules. Fitting them is substantially similar except: Three phase units have 3 lives and 1 neutral incoming supply connection. Single phase units have 1 live and 1 neutral incoming supply connection. Care must be taken to ensure that phase loading is within limits.

WARNING

**Supply rating per cabinet
100 Amps per bus bar.**

When fitting a 25 Amp 3 channel module the Polarisation pin in the corresponding power module bay must be changed over (see page 3).

This equipment is designed for controlling lighting and is unsuitable for any other purpose. Zero 88 reserves the right to make changes to the equipment described in this handbook without prior notice.
E&OE.

© Zero 88 lighting Ltd. 1993.

Warning

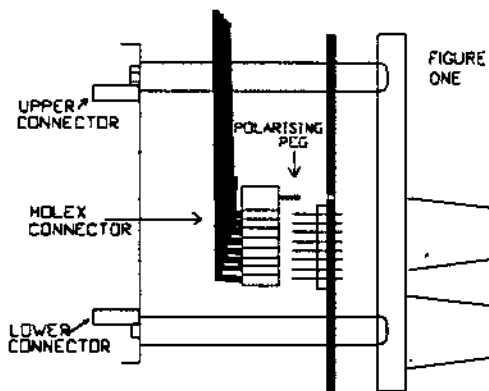
Isolate from the mains supply before starting.

FITTING MODULES IN TO A CABINET

If fitting different types of modules in the same cabinet, decide in which bay each module is required before starting.

There is no technical limitation. Any module can go in any position. It is easier to fit module four first. See figure 8

- 1 Ensure the mains supply is isolated from the cabinet.
- 2 With the control section on the left and the output terminals on the right line the module up with the bay in the cabinet.
- 3 Connect the Molex connector to the pins on the right hand side of the module.
- 4 Angling the top slightly towards you, line up the lower connector with its mating half in the cabinet.



LEFT HAND END VIEW OF CONTROL MODULE

- 5 Once lined up, push both connectors in fully.
- 6 Fix the control module to the cabinet by screwing the two bolts supplied through the fixing holes shown below.

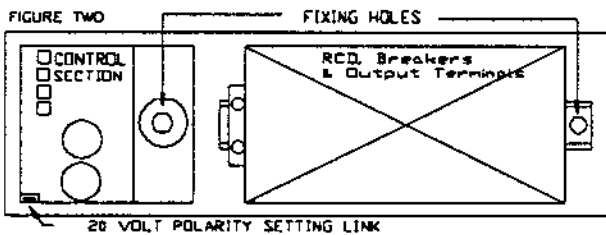
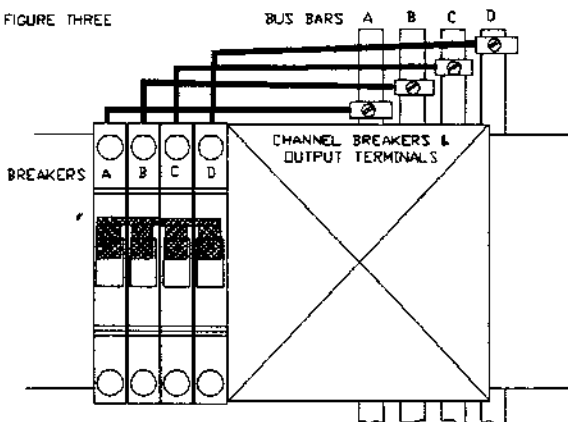
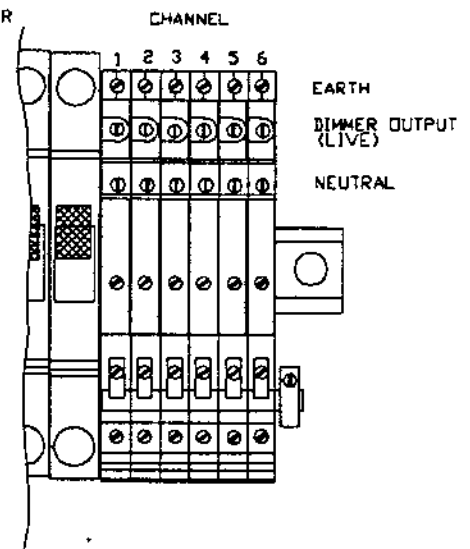


FIGURE THREE



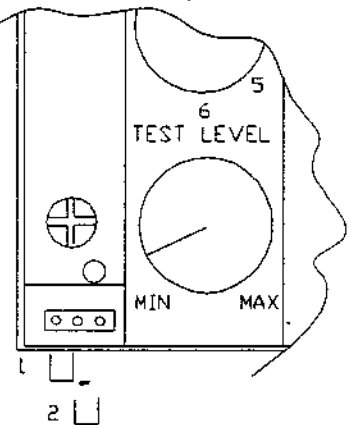
- 7 Connect up the phases: Left hand breaker to left hand bus bar etc. See figure 3. For single phase modules the cable may be connected to any of the Phase bus bars (marked A,B,C, on figure 3). Ensure the power limit of 100 Amps per cabinet per phase is not exceeded.
- 8 Fit the other modules by repeating the above.
- 9 Once all modules are fitted, it is possible to connect the output wiring. See figure 4. Fill in the configuration sheet provided with the cabinet for future reference.

FIGURE FOUR



- 10 Move shorting link to select +20v or -20v to the control input terminal blocks. Power out rating nominal + or -20v at 200 mA per module.

FIGURE FIVE



- 11 Fit front panels. Using the screw provided with the Cabinet.
- 12 If any Bay does not have Control Modules fitted blanking plates must be fitted in those positions.

WARNING

The cabinet is NOT ELECTRICALLY SAFE unless all the control module bays have panels fitted.

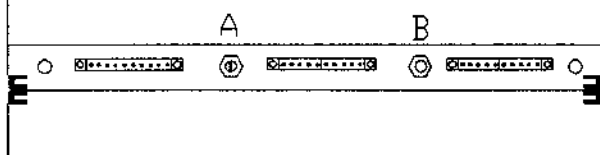
TO POLARISE THE POWER MODULE

Each Power module bay must be polarised to be compatible with the power rating of the control module fitted in the corresponding position.

Power Module bays are supplied polarised for 10 Amp Power Modules to change for a 25 Amp module, using a screwdriver, move the centre polarising peg from the 10 Amp to the 25 Amp position.

Note. Position "A" is the 10 Amp position and "B" is the 25 Amp position.

FIGURE SIX



Control Inputs.

Analogue inputs come from the terminals under the Wiring Chamber cover. See the Diagram below for wiring information.

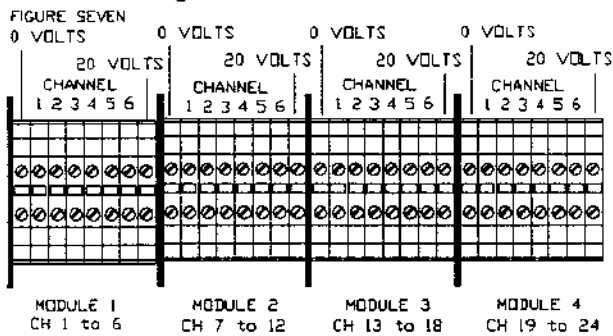


FIGURE EIGHT

