



Zero 88 Product Catalogue

English - Issue 25



EATON

Powering Business Worldwide

Lighting Systems by Eaton



Eaton Lighting Systems

Eaton Lighting Systems is a specialist lighting controls manufacturer with more than 45 years of operational expertise in the design, supply and support of lighting control systems in the entertainment, architectural and energy saving markets. Our focus is to deliver innovation, reliability and flexibility through our portfolio of industry leading systems including Zero 88, iLight and Greengate.

iLight Series

Global offering of architectural lighting control systems designed to create stunning visual impact and atmosphere in hospitality, restaurant, retail, residential, commercial & exterior applications.

- Intuitive user interfaces
- Scaleable network with distributed intelligence
- Dimming and switching of all load types

iLight.co.uk

Greengate Series

Global offering of energy management lighting controls for commercial and industrial applications for both the 230V & 110V markets.

- Flexible, scaleable lighting control networks
- Occupancy sensors
- Daylight harvesting

greengatecontrols.co.uk

Zero 88 Series

Zero 88 products by Eaton have been serving the needs of the entertainment lighting industry for over 45 years. We have unrivalled experience in the specialist needs of the entertainment technology industry backed up by a global sales and support footprint through our in house teams and worldwide distribution network.

Our success is built upon delivering a range of versatile products that are simple to learn and use, yet powerful enough to meet the varied needs of the theatre, television, rental, education and live performance user.

Zero 88 products are designed and built using an ISO9001 quality system, reflecting our commitment to combining in house design, manufacture and software development to ensure the highest possible performance standards.

CONTENTS

Lighting Systems by Eaton	2
Why Zero 88?	3
Lighting Control Consoles	4 - 15
Choosing the right Console	5
ZerOS	6
FLX S24	8
FLX S48	9
FLX	10
ZerOS Wing	11
Solution & Solution XL	12
SCD Server Pro	13
Juggler & Level 6	14 -15
Power Control	16 - 22
Chilli Switching & Dimming	18 - 19
Chilli Accessories	19
Spice	20
Betapack 3, Alphapack 3	21 - 22
Services & Support	23

Why Zero 88?



Zero 88 provides professional lighting control products to the entertainment industry at accessible prices. We focus on delivering outstanding products with lifetime service and value, making us the entertainment lighting control supplier of choice for thousands of venues worldwide.

Intuitive Control Philosophy

Ease of use is high on our priority list. All Zero 88 products are intuitive; designed so that new users can quickly get up to speed and more experienced lighting professionals can easily program more complex lighting effects.

- **Creative user interface design**
- **Instant access to commands and information**
- **Standard industry syntax**
- **Customisable features**

Best Value

Zero 88 products are robust and reliable, designed to withstand the demanding environment of live performance, including heat, dust, humidity, limited space and rigorous touring. Our products are designed to last, but if something should go wrong all our products are supported by an industry leading 3 year warranty.

Our process of continued innovation and development means Zero 88 products are frequently updated in line with changing industry needs; ensuring users have access to the very latest control technology.

- **Industry leading 3 year warranty**
- **Continued innovation**
- **Free software updates**

Product Expertise

Zero 88 meets the needs of the entertainment lighting industry by doing what we do best – delivering targeted, reliable products to distinct segments of the marketplace such as theatre, education, television and live performance. Knowing that one product does not fit all, we research each sector and focus on developing creative solutions to meet your unique requirements.

- **Unrivalled 45 years experience**
- **Specially targeted products based on user feedback**
- **Worldwide distribution network**

Customer Service Excellence

Zero 88 is dedicated to customer satisfaction and support. We work hard to build and maintain relationships with our global distribution partners to ensure customers get the very best service.

Regular free training courses, a 24 hour support forum and an extensive web-based support centre ensure our products are supported from specification, to installation and through their lifetime.

- **Global presence – local support**
- **Regular free training courses**
- **24 hour support forum**
- **Extensive web based support centre**

Introducing our Lighting Control Consoles



Zero 88 provides a range of lighting control consoles, each tailored to meet the needs of different types of user. Choosing the right console depends on a number of key factors.

Nature of Performance

The nature of the performance you are lighting will have an affect on the lighting design required, the control options needed for programming and the amount of time available.

Traditional theatre performances generally have a little longer for programming, allowing for pre-determined scenes and sequential playback. At the higher end, lighting can be incredibly complex and options must be available for making minor adjustments and creating subtle effects.

During live performances lighting is often required on the fly, so the ability to busk on the console and quickly access lighting scenes and effects is critical.

Budget

We believe great lighting control products should be available to everyone and not just those with big budgets. Zero 88 understands that customers are looking for great value, and we manufacture a range of consoles that cater for different requirements and budgets.

Space available

Space may sound like a minor consideration but many control rooms are cramped, with space for equipment at a premium. For many applications there is a balance between features required and space available, especially in small to mid sized venues. Consideration must be given to where the console will be located, especially if space for peripheral items such as monitors and keyboards is also required.

Level of control complexity

Different shows require different levels of lighting complexity and a different mix of fixtures that need controlling.

When choosing a console it is important to understand what lighting fixtures and auxiliary items you need to control, and how many of each are required. Control of LED, moving lights and conventionals is particularly important. Whilst many consoles can control these fixtures, simple and effective control can only be achieved easily by those products specifically designed for them.

Level of user experience

There are many consoles in the marketplace but matching your console to the level of user experience is probably one of the most critical factors. Too complicated and new users will get confused, too simple and experienced professionals will get frustrated.

If your venue has a variety of operators or is only ever used for the occasional production, it is important that your console is uncomplicated so that users can easily access and manipulate the lighting in an intuitive and straightforward way.

For users with more experience the console must provide an extensive range of tools and programming options to allow them to quickly create and execute sophisticated lighting designs time after time.



Choosing the right console



	Product	Description	Suitable For	Venues & Applications	
Simple and Intuitive	Level 6 DMX	Manual lighting control desk, perfect where minimal control is all that is required	Basic lighting applications and users with limited knowledge or experience	<ul style="list-style-type: none"> • Education • Dance Studios • Local Halls • Regional TV studios 	
	Juggler	Manual lighting control with timed cross fades and sequence functions	Basic lighting applications and users with limited knowledge or experience		
Mid-range & Flexible consoles running ZerOS	FLX S24 FLX S48	Feature packed entry level memory console for generics, LED and moving lights	Programming and playback of conventional fixtures (dimming channels), colour changing LEDs and moving lights. Novice to mid level users	<ul style="list-style-type: none"> • Education • Small Theatre • Dance Studios • Local Halls • Corporate Events • TV • Live Music • Rental 	
Fully Featured consoles running ZerOS	FLX	Compact, powerful and portable console with intuitive control of up to 4096 channels	Venues that host a variety of performance types (theatre, dance, live music, comedy, presentations etc) and have different levels of user experience	<ul style="list-style-type: none"> • Mid Scale Multi-purpose Venues • Rental Companies • Houses of Worship • Live Events • Theatre • TV • Education 	
	Solution Solution XL	All round console that provides generic dimming control and capability for up to 200 moving lights	Venues that host a variety of performance types (theatre, dance, live music, comedy, presentations etc) and have different levels of user experience		
Rackmount Replay Unit	SCD Server Pro	Fully-equipped 19" Rack Mount DMX Lighting Control Playback Unit	Racking backup for ZerOS Lighting consoles, Stand-alone DMX replay unit with external triggering, DMX Integration with iLight architectural control systems	<ul style="list-style-type: none"> • Console backup • Theme Parks • Facades • Archtainment • Leisure Installations 	

ZerOS - console operating software



Quick & simple

Tools such as Ad Fixtures and Auto Palettes do all the prep work, operating quicker than ever before. Ideal for conventionals, moving lights, colour changing, fixtures and specials.

Colour picking

Speed up operation by selecting a colour from any image you choose. Filter lookups help you easily recreate a colour filter. "Mood Boards by LEE Filters" group these into common emotions such as 'Anger' and 'Love'.

Auto save

ZerOS continuously saves your show onto internal Non-Volatile RAM, meaning you'll never lose any data in the event of a power outage.

Visualisation

Preview your lighting through a 3D emulator when you don't have access to the venue using Art-Net 4 or sACN directly. ZerOS also includes specific support for Capture, Light Converse and WYSIWYG.

Touch Support

External touchscreen monitors (including Multi-Touch) can be added via USB. Alternatively, iPads, Android™ tablets or Windows laptops can be used as a wireless monitor using our free apps.



Networking

A range of accessories and networking equipment means ZerOS includes support for: Art-Net 4, streaming ACN (E1.31), Tracking backup, Media servers and Visualisation.

Show control

ZerOS can sit in the middle of a show control setup, triggered by a central computer to ensure your show is perfectly in sync, time after time.



Phantom ZerOS - PC console emulation

Phantom ZerOS is an offline editor for the ZerOS consoles and provides full desk functionality from a standard Windows PC. Show files can be loaded from USB, manipulated using the standard desk controls and then re-saved as required. With the purchase of an unlock dongle, Phantom ZerOS can also be unlocked as a tracking backup solution to the main desk.

ZerOS is the operating system for all premium lighting consoles from Zero 88.

ZerOS - Console software

ZerOS is based upon a Linux operating system and features a window based navigation system which will be familiar to any computer user. Simple controls allow the customisation of the monitor displays, including resizable windows and advanced visual displays such as Colour Pickers.

ZerOS Library - At the heart of ZerOS

Included with ZerOS is the latest Zero 88 fixture library. This comprehensive library includes details about colours on fixed wheels, gobo images and position information enabling ZerOS consoles to present a unified set of controls, regardless of the fixture being controlled.

Apps

Free on iOS® and Android™ phones and tablets, along with Windows® laptops.



ZerOS Remote

ZerOS Remote enables wireless control of your rig, allowing you to manipulate, control and playback your shows from your smart phone or tablet. It's especially useful during a focus session.

ZerOS Monitor

ZerOS Monitor connects to any Zero 88 lighting console running ZerOS, and emulates an additional external touchscreen monitor, but wirelessly through your tablet or laptop over WiFi.

Apple Watch focus remote

The Apple Watch app acts as a quick, easy, and safe focus remote, providing access to channels and groups with tools such as highlight and RemDim.

Download now!

Visit: zero88.com/software/zeros/ to download the latest free Software release for your ZerOS console.

ZerOS - Console Features

Features		FLX S24	FLX S48	FLX	Solution	Solution XL	SCD Server Pro
Capabilities	Number of channels	48	96	2048	248	296	4096
	Number of universes	1		4	4		8
	Universe upgrade option	Up to 2U		Up to 8U			
	Art-Net 4 & streaming ACN (E1.31)	✓		✓	✓		✓
	Number of playbacks	49	97	241	201	601	1001
	Command line			✓			✓
	Tracking	Optional		Optional	Optional		Optional
Software	Colour & image picker	✓		✓	✓		✓
	Colour, Beamshape & Position palletes	48 of each	96 of each	240 of each	400 of each		1000 of each
	Groups, Effects & Macros	48 of each	96 of each	240 of each	400 of each		1000 of each
	Move on dark	✓		✓	✓		✓
	Effects engine	Auto effects		✓	✓		✓
	Remote apps (iOS® & Android™)	✓		✓	✓		✓
	Tracking backup			✓	✓		✓
	ASCII showfile inport	✓		✓	✓		✓
	On board Fixture Library	✓		✓	✓		✓
	On board Help	✓		✓	✓		✓
Hardware	Multi-Function Faders (MFFs)	24	48	24			
	Master Playback	✓		✓	✓		
	Additional dedicated playback faders				10	30	
	Dedicated channel faders				48	96	
	User Definable Keys (UDKs)			4 (10 pages)			
	Encoder wheels	4		4	3		
	Integrated trackball						
	Grand master	Optional on MFFs		✓	✓		
	DMX outputs	1 x 5 pin XLR, 1 x 3 pin XLR		2 (5 pin XLR)	4 (5 pin XLR)		4 (5 pin XLR)
	RDM Enabled	✓		✓	✓		✓
	DMX Inputs				1 (5 pin XLR)		
	Monitor outputs	1 (DVI-D)		1 (DVI-D)	1 (VGA)		1 (VGA)
	USB ports	2		5	4		4
	Ethernet	✓(RJ45)		✓(EtherCON)	✓(RJ45)		✓(RJ45)
	MIDI (Showcontrol and Timecode)			✓			✓
	LTC (SMPTE Timecode)				Optional expansion card		✓(3 pin XLR)
Remote switches / contact closures			8			6	
Power supply	External		Internal (TRUE1)	External		Internal (IEC)	



Easy colour selection

Quickly and accurately select colours from the multi-touch colour picker, colour palettes or even an uploaded image.

Moving light controls

Quick and intuitive control via precise encoder wheels, multi-touch Pan / Tilt grid and automatic "Move on Dark".

Apps & networking

Free Apps act as a wireless monitor to control your rig. FLX S also supports a range of networking accessories.

Dedicated GO & Function Buttons

Dedicated buttons for "GO" and other regularly used functions ensure they are always quickly and easily available.

'Step by Step' guidance

FLX S "guidance" can help you through the key features of the console to learn or refresh your skills at your own pace.

RigSync

Keeps your console synchronised with your lighting rig, without the need to understand DMX or think about patching.



FLX S consoles are easy to learn and simple to use - delivering all the features you need at an affordable price.

FLX S24

Ultimate portability, offering a powerful LED and moving light controller in a small 19" unit with direct access to each of the lights in your rig:

- ✓ Control up to 48 LED, moving lights and conventionals
- ✓ 24 multi-function faders
- ✓ 49 playbacks (each with submaster & full cued stack functionality)
- ✓ 48 groups, 4 x 48 palettes (Colour, Beamshape, Position, Effect)
- ✓ 19" rackmountable (6 rack units high)

Key Features (both consoles)

- ✓ Multi-touch interfaces for Colour and Moving Lights
- ✓ Dedicated GO button & playback fader for theatrical control
- ✓ Hands-on intuitive control via 4 encoder wheels
- ✓ Free mobile apps for wireless control of your ZerOS console on iOS® and Android™ devices
- ✓ Multi-lingual step-by-step touch screen guidance
- ✓ Art-Net 4 and sACN for network output & wireless connection to smart phone / remote monitors
- ✓ 7" multi-touch screen
- ✓ Automatic Groups, Palettes, Effects and Macros
- ✓ Colour picking, mixing & image capture
- ✓ Mood Boards by LEE Filters
- ✓ Additive, subtractive and HSV control
- ✓ Store single or multiple cues on each of the playbacks
- ✓ Built-in fixture library
- ✓ RDM compatibility
- ✓ Showfile compatibility with other ZerOS consoles
- ✓ Quiet, dust free, fanless operation
- ✓ One DMX universe, upgradable to two universes
- ✓ Two XLR Outputs (1 x 5 pin + 1 x 3 pin)
- ✓ 3 year warranty



ZerOS - FLX S48



Double the power with intuitive and hands-on control of up to 96 fixtures, and a touch monitor output to provide quick access to palettes and an overview of the show.

FLX S48

- ✓ Control up to 96 LED, moving lights and conventionals
- ✓ 48 multi-function faders
- ✓ 97 playbacks (each with submaster & full cuestack functionality)
- ✓ 96 groups, 4 x 96 palettes (Colour, Beamshape, Position, Effect)
- ✓ DVI-D output for optional external touch screen (1024 x 768)

Key Features (both consoles)

- ✓ Multi-touch interfaces for Colour and Moving Lights
- ✓ Dedicated GO button & playback fader for theatrical control
- ✓ Hands-on intuitive control via 4 encoder wheels
- ✓ Free mobile apps for wireless control of your ZerOS console on iOS® and Android™ devices
- ✓ Multi-lingual step-by-step touch screen guidance
- ✓ Art-Net 4 and sACN for network output & wireless connection to smart phone / remote monitors
- ✓ 7" multi-touch screen
- ✓ Automatic Groups, Palettes, Effects and Macros
- ✓ Colour picking, mixing & image capture
- ✓ Mood Boards by LEE Filters
- ✓ Additive, subtractive and HSV control
- ✓ Store single or multiple cues on each of the playbacks
- ✓ Built-in fixture library
- ✓ RDM compatibility
- ✓ Showfile compatibility with other ZerOS consoles
- ✓ Quiet, dust free, fanless operation
- ✓ One DMX universe, upgradable to two universes
- ✓ Two XLR Outputs (1 x 5 pin + 1 x 3 pin)
- ✓ 3 year warranty

Easy colour selection

Quickly and accurately select colours from the multi-touch colour picker, colour palettes or even an uploaded image.

Moving light controls

Quick and intuitive control via precise encoder wheels, multi-touch Pan / Tilt grid and automatic "Move on Dark".

Apps & networking

Free Apps act as a wireless monitor to control your rig. FLX S also supports a range of networking accessories.

Dedicated GO & Function Buttons

Dedicated buttons for "GO" and other regularly used functions ensure they are always quickly and easily available.

'Step by Step' guidance

FLX S "guidance" can help you through the key features of the console to learn or refresh your skills at your own pace.

RigSync

Keeps your console synchronised with your lighting rig, without the need to understand DMX or think about patching.





Colour Picker

Colours can be quickly selected using the built in colour picker, or by selecting a colour from any image you wish - such as a photograph or company logo.

Filter Libraries

Built-in filter lookups from LEE, Rosco and Apollo help recreate colour filters, and "Mood Boards by LEE Filters" combine complimentary colours into groups such as "Anger", "Royalty" and "Love".

Multi-touch control

The built in 7" touch screen uses "Projected Capacitive Touch" (PCAP) technology, giving true multi touch capability.

Industry Standard Syntax

Whatever your background, FLX will feel instantly recognisable due to the industry standard, familiar syntax and intuitive fader-per-channel intensity control.

Designed to be tough

Featuring a metal body with dual skin construction and scratch resistant coating, FLX has been designed to perform in the toughest of environments.

Back up

Integrated "Fe-RAM" stores every button press made to ensure no data is lost, and FLX can fully back itself up to a second console or SCD Server Pro.

Software Capacity

- ✓ 2048 control channels (upgradable to 4096)
- ✓ 4 universes (upgradable to 8) of Art-Net 4 or sACN, and 2 DMX outputs
- ✓ 241 Playbacks (equivalent of Cue Stacks, Submasters or Chases)
- ✓ 10,000 cues
- ✓ 4 x 240 Palettes (Colour, Beam, Shape, Position)
- ✓ 240 Effect palettes, with fully customisable effects engine
- ✓ 240 groups
- ✓ 240 macros

From design to manufacture, the FLX lighting console has been developed to work in a wide range of demanding situations, with specific considerations for live events & hire, touring productions, multi-purpose venues, theatres and educational applications. FLX is adaptable and upgradeable with channel additions and multiple wing options.

Designed to save you time and maximise your creativity, the FLX lighting console is fully featured, portable and easy to use.

Whatever your background, FLX will feel instantly recognisable, due to the industry- standard familiar syntax and intuitive fader-per-channel intensity control. FLX gives you unlimited access to 2048 channels (upgradable up to 4096), with no fixture patch limitations and no expensive upgrades ever needed.

We give you more time to do what you do best – be creative. Tools such as Ad Fixtures and Auto Palettes do all the prep work, getting you ready to operate quicker than ever before. Programming time is reduced with a simple three-step programming method for moving lights, colour changing and conventionals - what you want, how you want it, where you want it. And for all those really important features you need over and over again – you always have direct instant access via the Z button.

Picking exactly the right colour is no longer a laborious task! Quickly and accurately create the colour you want using either the encoder wheels, or the built in touch screen colour picker and quickly record it straight onto any of the 240 instant-access colour palettes, to recall later.

Software Features

- ✓ Familiar Command Line interface
- ✓ Colour picker, filter lookups, "Mood Boards by Lee Filters"
- ✓ Stage sizing and positioning
- ✓ Auto palettes, groups and fixture macros
- ✓ Gobo previews and library
- ✓ Move on Dark
- ✓ Tracking options available
- ✓ Support for wireless remote control through handheld devices and remote monitors
- ✓ Support for Tracking Backup over Ethernet

ZerOS Wing



ZerOS Wing can be added onto any ZerOS console, or used with Phantom ZerOS (the offline PC editor) to increase the number of channel playback faders available.

Designed to be simple and quick to set up and use. Just plug in via USB and any ZerOS console is instantly upgraded.

A single button switches quickly between 'Channels' and 'Playbacks' at any time, and the 'Page Up' and 'Page Down' buttons are used to either switch between all patched channels on the console, or each page of playbacks. When multiple wings are used, simply setup each Wing onto a different page.

Key Features

- ✓ 24 multifunctional faders and 24 flash buttons
- ✓ Switch between 'Channels' and 'Playbacks' at the touch of a button
- ✓ Each ZerOS Console can add up to 6 Wings
- ✓ Key hole slots for wall mounting
- ✓ Optional legs for mounting at the rear of the FLX console



Multiples of 24

Each ZerOS Wing has 24 multifunctional faders and 24 flash buttons. Multiple ZerOS Wings can be plugged in at any one time, increasing the hands-on operation of any ZerOS console.

Multifunctional

Faders on ZerOS Wing can be switched between 'Channels' and 'Playbacks' at the touch of a button. They'll even automatically switch when you're ready to record a cue.

Quick Setup

Wings can be plugged into any ZerOS Console, or laptop running Phantom ZerOS, by simply plugging in a USB cable. With the use of the 'Fader Function' and 'Page Up/Down' buttons, setup is complete.



ZerOS - Solution & Solution XL



ZerOS Operating Software

ZerOS offers up to 4 universes of control, with a clean, simple user interface and advanced features including a colour picker, moving light library, gobo images and touch screen support.

Channel Faders

48 or 96 faders provide intuitive hands on control of all your dimming channels.

Playback Faders

10 or 30 playback faders offer manual adjustment of scenes, cues and chases on the fly, along with a Master Playback for theatrical control.

Multi-Functional Keys

The Solution consoles provide multi-functional keys with LCD displays to give you the information you need whenever you need it, and access to functions and settings throughout ZerOS.

Control Wheels

Three ergonomic control wheels are provided for fixture control, allowing simple intuitive control over Pan and Tilt with the thumb and first finger.

Networking

Full networking capability, including sACN, Art-Net 4, support for popular visualisers, wireless mobile apps (iOS® and Android™), Tracking Backup and Ethernet Wings.

Support For

- ✓ 248 (or 296) devices across four DMX universes via 4 x 5 Pin XLR and Ethernet
- ✓ Thousands of fixtures through the onboard fixture library, updated regularly
- ✓ iOS® and Android™ devices through dedicated applications
- ✓ Shows cross loadable with other ZerOS consoles and importable from Frog Series and ASCII format
- ✓ Tracking Backup and popular visualisers over Ethernet
- ✓ 1 x XGA monitors, and support for Touch Screen displays
- ✓ Software updates, show backups and connection of accessories via the onboard USB ports
- ✓ Midi (Notes, Timecode and Show Control), SMPTE and Remote inputs via optional upgrade card

The Solution & Solution XL are comprehensive multi-purpose lighting consoles, running the powerful ZerOS operating software.

Solution & Solution XL provide simple clear progressions, from basic two preset generic control through to moving light and LED control. Hands on control with dedicated playback faders and channel faders, combine with a powerful theatre stack to enable any type of show.

The flexible front panel includes both playbacks and live control options, to allow the Solution consoles to be adapted to multipurpose venues where the requirements change daily. From simple moving light patching to powerful offset effects, the Solution & Solution XL have been designed with flexibility at their core.

Featuring ZerOS software, the Solution consoles offer powerful adjustment of complex effects, multiple tracking playbacks and adjustable user preferences to enable full professional programming options. Advanced palette references, tracking updates and remote tracking backup options mean you can rely on the Solution consoles to grow as your requirements do.

Designed to be easy to understand, yet adaptable enough to cope with even the largest lighting systems, Solution consoles make controlling your entire system as easy as turning on your house lights.

Key Features

- ✓ Playback faders for scene, multiple cues or chases
- ✓ Master playback for full theatrical playback
- ✓ Tracking and auto Move on Dark
- ✓ Automatic creation of palettes, groups and fixture macros
- ✓ Fully customisable effects engine and Sound to Light functionality
- ✓ Colour picker, colour filter library, pan / tilt grid and gobo images
- ✓ Ergonomic control wheels for precise moving light control
- ✓ 400 each of Colour, Beamshape, Position and Effect Palettes
- ✓ 400 Groups and 400 User Definable Macros
- ✓ Dimensions: Solution: 115 (H) x 765 (W) x 575mm (D)
Solution XL: 115 (H) x 1205 (W) x 575mm (W)
- ✓ Weight: Solution: 16Kg / 35lb
Solution XL: 26Kg / 57lb

ZerOS - SCD Server Pro



The SCD Server Pro is a rackmounted, fully featured lighting controller, ideal for use in larger performance installations and networks where show replay, tracking backup or standalone operation is required.

SCD Server Pro runs ZerOS - a powerful and proven lighting control application designed for the control of all types of performance lighting including LED, intelligent moving lights, media servers, effects and traditional theatrical lighting fixtures and dimmers.

SCD Server Pro features DMX input and capture along with interfaces to MIDI, ArtNet 4, streaming ACN and contact closures as well as acting as an iLight iCAN network device within a distributed intelligence architectural lighting network.

Tracking backup & Event Controller

- ✓ 19" Lighting Control System based upon the ZerOS operating system
- ✓ Up to 4096 Control channels, fully patchable to 8 DMX Universes (DMX Output via 5 Pin XLR or via Ethernet)
- ✓ Cue Stack Sequence Playback
- ✓ Effects engine
- ✓ Colour, Beamshape, Position and Effect Palettes
- ✓ Integrated colour picker (CMY, RGB and HSV)
- ✓ Auto palettes, groups and macros
- ✓ 4x Onboard USB ports for software updates, show backups and connection of accessories
- ✓ XGA Monitor Output
- ✓ Onboard fixture library
- ✓ Support for remote control through handheld devices and remote monitors (iPhone®, iPad® and Android™ devices)
- ✓ DMX 512 Input
- ✓ 6 Channel Close Contact trigger
- ✓ MIDI & SMPTE Timecode
- ✓ Sound to Light Input

Architectural System Integration

- ✓ iCANnet™ inputs (Can-Bus) for system integration with control panels, touch screens or other iCAN network devices
- ✓ Simple patching of blocks of 128 Channels to iCAN areas
- ✓ DMX addressable per channel
- ✓ iCANnet™ supports multiple SCD Server Pro units



ZerOS Operating Software

ZerOS offers up to 8 universes of control, with a clean, simple user interface and advanced features including a colour picker, moving light library, gobo images, part cues and touch screen support.

Show Backup and Replay

Full tracking backup for all ZerOS consoles and powerful show replay capacity with LCD display for instant confirmation of cue information and status.

Wide Connectivity

DMX over Ethernet (Art-Net 4 and sACN), support for popular visualisers, iOS® and Android™ apps, Midi (Notes, Timecode and Show Control), SMPTE, Sound to Light, Remote inputs, DMX In and CAN.

Example of a SCD Server Pro Networking application





Faders

The Juggler is simple to control – faders on the front panel are laid out to be easy to use, for hands on control.

Connection

Connection of the Juggler couldn't be simpler – plug in your DMX cable and PSU (supplied) and away you go.

Sequence Memories

Basic sequences can be programmed on the Juggler using the in built sequence memories.

Key Features

- ✓ Two Preset Operation
- ✓ 12/24 Channels
- ✓ Flash Buttons
- ✓ 12 Sequences of 99 Steps
- ✓ Multiple Channels per Step
- ✓ Sequence Master
- ✓ 19" Rack Mounting
- ✓ Fade Timer
- ✓ Speed Control
- ✓ True Dipless Crossfade
- ✓ Grand Master
- ✓ Wide Mode



Juggler is a manual/memory lighting control desk specifically designed for the smaller stage; a perfect solution for small scale lighting systems.

Juggler controls up to 24 channels using preset faders avoiding the cost and complexity of more sophisticated lighting desks. Applications include schools, houses of worship, rental and conference events.

For larger shows, the wide mode feature allows 24-channel operation, with an internal scene store for two-preset operation. 12 sequences of 99 steps can be stepped manually to provide a simple cue list with go button functionality. Sequences may also be chased using the adjustable speed control.



Level 6



Level 6 DMX is a simple and intuitive small lighting desk, making it ideal for simple DMX control applications as diverse as schools, meeting rooms and museums.

Featuring six channel faders and an overall master – the Level 6 DMX is convenient for hand held operation or alternatively fixed to a wall. Direct fader control also makes it useful for simple control of 2 RGB colour mixing groups or even used for testing and providing DMX control. An external power supply is included in the package.



6 Channels

6 channel faders allow for smooth fading of individual DMX channels.

Simple Connectivity

Simple connectivity with only power supply and DMX output required.

Grand Master

A grand master fader controls all 6 channels, fading them relative to their current level.

Key Features

- ✓ 6 Channel Manual Lighting Console
- ✓ Single preset operation
- ✓ Grand Master
- ✓ DMX Control
- ✓ Rugged case
- ✓ Power LED



Power switching and dimming products



Product	Alphapack 3	Betapack 3	Spice 1210i	Chilli Pro 4	Chilli Pro 6	Chilli Pro 12 & 24	SCMR1232	
Description & Applications	3 channel portable dimmers with built in safety features and DMX control. Suitable for smaller applications requiring distributed dimming.	Excellent value 6 channel dimmers for multipurpose use. Rack Mount, freestanding or wall mount. (With a range of international socket options).	High specification dimmers in a tough 19" chassis. Ideal for rental companies and corporate events or applications requiring distributed dimming.	Chilli is a range of high density wall mounted convection cooled dimming. Quick to install and set up, easy to operate and maintain; Chilli dimmers are the workhorses of any hard working professional venue. Chilli Inductive Dimmers are available in 4, 6, 12 and 24 channel dimming packages featuring 10, 16 and 25 Amp load capacities with optional RCD protection contained in a slim line wall mounting enclosure.			Designed in a very cost effective compact DIN rail enclosure - the SCMR1232 features 12 feed through latching relays with a manual override switch for each channel.	
Channel Outputs	Channels	3	6	12	4	6	12, 24	12
	Max Load (amps)	6.3	10	10	10	25	10, 16	32
	Protection	Fused	MCB	MCB	MCB			
	Neutral disconnect		(some variants)	✓	✓			
	Bypass option						✓	
	Relay option				✓		✓	✓
	RCBO option						✓ (12ch only)	
HF option				✓				
Power Inputs	Single phase	✓	✓	✓	✓ (Non RCD version only)			✓
	Three phase		✓	✓		✓	✓	✓
	Voltage	230V 50/60Hz	230V 50/60Hz	230V 50/60Hz	230V 50/60Hz			230V 50/60Hz
	RCD option					✓	✓	
Control Inputs	Built in faders	✓						
	DMX	✓	✓	✓	✓			✓
	Memories		12	12 x 10 areas	12 x 10 areas			
	Sequences		3	3	3			
	RDM		✓		✓			
	ChilliNet			✓	✓			
Installation Use	Free standing	✓	✓	✓				
	Truss/bar mount	✓						
	Rack mount		✓	✓				
	Wall mount	✓	✓		✓			✓ (DIN rail)
Other	Cooling	Convection	Convection	Fan	Convection			Convection
	Lockable door				✓			

Visit our website: www.zero88.com for datasheets and specifications.

Installation power switching & dimming cabinets



Today's performance installations demand that lighting control intelligence can operate building wide; the new Chilli Pro power control cabinets have been designed from the start with this in mind and can deliver outstanding performance dimming. With some versions even offering hot power and relay switching.

Chilli Pro is a range of high density wall mounted convection cooled power switching and dimming cabinets. Quick to install and set up, easy to operate and maintain; Chilli Pros are the workhorse of any hard working professional venue.

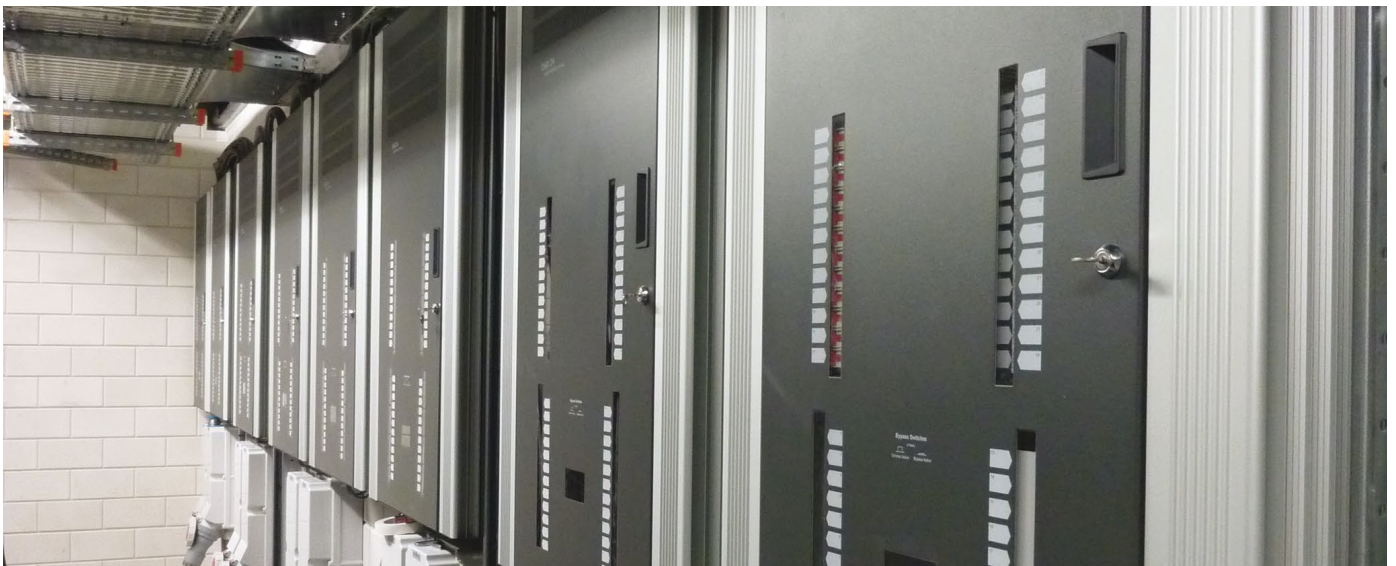
Chilli Pros are available in 4, 6, 12 and 24 channel packages featuring 10, 16 and 25 Amp load capacities with optional RCD protection, relay channels, bypass switches, RCBOs and HF dimming, contained in a slim line wall mounting enclosure.

The user interface and backlit LCD screen on each dimmer ensure simple convenient set up for DMX patching, preheat, topset and dimmer curves and for peace of mind, the user interface and all breakers are also protected by a lockable breaker cover.

A choice of responses to DMX failure, backup memories, built in chases and an alarm input trigger complete the versatile Chilli dimming package.

All Chilli Pro dimmers include:

- ✓ Single Pole Neutral Disconnect breakers per channel
- ✓ Automatic frequency tracking
- ✓ 100% Duty Cycle, convection cooled
- ✓ Simple user interface
- ✓ Variable level channel test
- ✓ 4 dimmer laws selectable per channel
- ✓ Preheat per channel
- ✓ Topset per channel
- ✓ DMX & ChilliNet control inputs
- ✓ DMX addressing per channel
- ✓ RDM enabled
- ✓ Built in, switchable, DMX line termination
- ✓ User defined back up memory
- ✓ Easy wall installation
- ✓ Common service applications need only a screwdriver
- ✓ UK designed and built
- ✓ 3 year warranty



Installation Dimming Range



Bypass Switches

Individual dimming channels can be switched to deliver mains power for intelligent fixtures, LED's, projectors and other non-dim loads - save wiring, simplify your set up, allowing you to connect your fixtures exactly where you want them. This "hot power" override brings peace of mind with a lockable door and viewing windows.



MCBs or RCBOs

Individual channels are protected by "Miniature Circuit Breakers" (MCBs) as standard. 12 channel units can be upgraded to "Residual Current Breakers with overload protection" (RCBOs). Eaton RCBOs are a combination of an RCD and MCB, providing over-current protection and earth fault current protection for each individual circuit, ensuring faults only interrupt individual channels.



Relays

Optional relays allow remotely controlled power switching via DMX. Relays can be used to control effects (such as kabuki drops and mirror balls), or to power intelligent fixtures, LED's, projectors and other non-dim loads. Along with out-of-the factory configurations, a 4 channel relay card is available to retrofit into any Chilli Pro 24 or the new Chilli Pro 12.



RCDs

"Residual Current Devices" can be optionally added to Chilli Pro 6, 12 and 24 channel cabinets. Eaton RCDs monitor the incoming supply, detect earth leakage, and break the incoming circuit if a fault is detected. RCD's are required as standard in some countries. RCBOs can alternatively be considered, as these limit inconvenience tripping to individual channels, rather than the whole unit.



Chilli Pro 4

Four channel 10A dimmer or four relays with HF dimming

Comes in two varieties – a four channel, 10 Amp dimmer and a four channel relay rack with "High Frequency" dimming (ideal for fluorescence and LED lighting control using 0-10V, 1-10V and DSI ballasts).

- ✓ 4 Dimming Channels
 - ✓ 10 Amps per channel
 - ✓ MCB per channel
 - ✓ Lockable breaker cover
- Options include:**
- ✓ Dimming
 - ✓ Relays
 - ✓ High Frequency dimming



Chilli Pro 6

Six channel 25A dimmer

Provides six channels, rated at 25 Amps each. Chilli Pro comes in the same size metalwork as Chilli 12, due to the higher channel ratings.

- ✓ 6 Dimming Channels
- ✓ 25 Amps per channel
- ✓ MCB per channel
- ✓ Optional RCD protection
- ✓ Lockable door
- ✓ Wiring chamber for easy installation

Installation power switching & dimming cabinets



ChilliNet

The slimline Chilli Control Panels can be employed where simple scene setting is required. Available in a variety of configurations, the control panels provide direct access to the internal memories and sequences of any Chilli Pro Cabinet simultaneously. Panels can be assigned to any one of the 10 areas.

Available in brushed satin stainless steel and brass with illuminated buttons, up to 50 Chilli Control Panels (4 per cabinet) can be used on a single network, wired using simple connections over CAT5 cable, providing multi-point control with modern aesthetics. A Last Man Out panel is also available featuring a keyswitch to allow a supervisor to turn the network on or off from a single location after a 30 second delay.

Chilli Pro 12

12 channel switching & dimming cabinet

Provides 12 channel of relay or dimming, with optional bypass switches for use when direct mains power is needed.

- ✓ 12 Dimming Channels
- ✓ Lockable door
- ✓ Wiring chamber for easy installation

Options include:

- ✓ 10A or 16A
- ✓ Dimming or relays
- ✓ Bypass switches
- ✓ MCBs or RCBOs
- ✓ RCD protection



Chilli Pro 24

24 channel switching & dimming cabinet

Provides 24 channel of relay or dimming, with optional bypass switches for use when direct mains power is needed.

- ✓ 24 Dimming Channels
- ✓ MCB per channel
- ✓ Lockable door
- ✓ Wiring chamber for easy installation

Options include:

- ✓ 10A or 16A
- ✓ Split dimming & relays (12/12)
- ✓ Bypass switches
- ✓ RCD protection



SCMR1232

Eaton's new SCMR1232 solves the increasingly challenging problem of adding DMX controlled relay power switching into an entertainment application. Designed in a very cost effective compact DIN rail enclosure - the SCMR1232 features 12 feed through latching relays with a manual override switch for each channel. The relays are individually rated for up to 32A operation to cater for even the most power hungry user, making them ideal for switching power for moving lights, hot power sockets, specials and LED equipment.

- ✓ 12 x 32 Amp
- ✓ Mounts to standard Top Hat (TS35) DINrail
- ✓ Switches resistive, inductive and capacitive lighting loads
- ✓ 'Built in' propagation delay in switching sequence 1-12
- ✓ Manual override of any channel
- ✓ Any phase on any input
- ✓ Integral processor
- ✓ DMX512 in (start address by 3 rotary encoders)
- ✓ 2 x Auxiliary Inputs
- ✓ Configurable start up mode
- ✓ CE compliant to all relevant standards
- ✓ Designed and manufactured to ISO9001:2008 standards
- ✓ iCAN support built in

Spice 12-10i



Spice 12-10i

Plug & Play

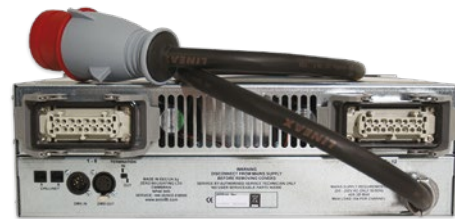
Spice 12-10i comes with a 63A 3 phase CEEform connector fitted, so it's ready to use right out of the box!

Rack Mounting

The racks can be mounted in standard 19" enclosures, for touring or installation purposes.

User Control

A simple user interface is provided on the front of the units to make configuration quick and easy.



Spice 12-10i Key Features

- ✓ 12 Channels, 10 Amps per channel
- ✓ 100% Duty Cycle
- ✓ DMX Address: Addressable per channel
- ✓ Multiple Dimmer Curves, selectable by channel
- ✓ 12 on-board memories and 3 sequences, via ChilliNet
- ✓ Topset & Preheat selectable per channel
- ✓ Operates on single phase, three-phase star
- ✓ Highly resilient supply protection
- ✓ DMX and ChilliNet Control
- ✓ Socapex and Harting output options
- ✓ Single pole plus Neutral thermal magnetic circuit breaker per channel
- ✓ Low-noise temperature controlled fans
- ✓ CEEform supply connector with 1.2m cable fitted as standard on multipole versions
- ✓ Dimensions: 132 (H) x 482 (W) x 420mm (D)
- ✓ Weight: 14.5Kg / 32.0lb

Spice 12-10i is a tough, supply tolerant, 19" 3U rack mounting 12 channel dimmer designed to offer a professional range of features whilst retaining simplicity, reliability and affordability.

Units are supplied complete and ready to use with either Harting or Socapex connectors and a CEEform 32 Amp connector and cable fitted.

Spice dimmers are found hard at work in the demanding environment of production and touring dimming as well as theatre, television and conference applications. When used in permanent installations the ChilliNet connectivity is an added bonus allowing the dimmers to be integrated as part of the architectural control system.

Betapack 3



The Betapack 3 range of 6 channel convection cooled dimmer packs offering cost effective, versatile dimming solutions for rack, wall mounting or portable use in a variety of socket versions.

Manufactured to the highest professional standards, this comprehensive range of convection cooled 6 x 10 Amp packs includes variants with sockets to match most global standards. Designed to be rack mounted, installed on a wall or carried, the Betapack 3 is suitable for a wide range of applications from amateur to professional, education to TV.

Betapack 3 range of dimmers have served the lighting industry for over 20 years and remain a firm favourite in lighting rental, installation and portable applications. Based on tried and tested technology, these robust, reliable, digitally controlled dimmer packs are incredibly versatile. Whether it's for schools, theatres, or TV Studios worldwide, these dimmers provide the core component of lighting systems globally.

The Betapack 3 range is supplied with MCBs on every channel, giving you peace of mind and maximum protection.

The versatility of the Betapack 3 means it can be 19" Rack Mount or installed on a wall using the brackets supplied, or made portable by adding the optional "Easicarry" kit consisting of a handle and four feet. Its legendary reliability and durability make it the dimmer of choice for many thousands of venues worldwide.



Socket Options

Betapack 3 includes a wide range of socket options to match your installation – from standard CEE17 16Amp connectors to regional variants for local connector types.

Intuitive Operation

A simple integrated user interface provides the ability to override channels, set DMX addresses, as well as modify and replay internal memories and sequences.

RDM

Remote Device Management support is built right into the Betapack 3, providing facilities to set DMX addresses for each channel from a remote location.

Rack Mount

Betapack 3 dimmers are designed to fit in standard 19" equipment racks, to allow them to be mounted alongside other rack mount equipment.

Location/Portable

Where rack mounting isn't ideal, an Easicarry Handle can be added to make the Betapack 3 a portable dimming pack.

Hardwired

As well as a variety of socket options, Betapack 3 dimmers can be Hardwired for permanent installation.

Key Features

- ✓ MCB protection
- ✓ Isolated DMX input
- ✓ Patchable per channel
- ✓ Preheat, Topset and Dimmer Law selectable per channel
- ✓ 12 backup memories
- ✓ 3 x 99-step sequences with adjustable times
- ✓ Automatic DMX termination when loop-through plug is removed
- ✓ RDM Enabled
- ✓ Auto frequency tracking
- ✓ Lock and Reset functions
- ✓ Temperature monitoring
- ✓ Convection cooled
- ✓ DMX addressing via front panel selectors
- ✓ DMX Status indication
- ✓ 19" Rack and Wall mounting brackets included
- ✓ Dimensions: 177 (H) x 447 (W) x 195mm (D)
- ✓ Weight: 8.0Kg / 17.5lb

Alphapack 3



Faders

Local control is provided by three internal faders on the unit, mixed highest takes precedence with the DMX input.

Flexible

The Alphapack 3 can now be set to any DMX address, providing the ideal mechanism to add three channels of dimming wherever there is a power outlet.

Overload Protection

The unique overload protection circuit ensures that the Alphapack 3 will never draw more than 10, 13 or 16 Amps (factory set), providing piece of mind and added safety.

Key Features

- ✓ Three Dimming Channels
- ✓ Available in 15A, PowerCON TRUE1, CEE22, Schuko, French and Swiss variants
- ✓ 6.3 Amps per channel
- ✓ Three fader Local Control
- ✓ Autoprotect Overload
- ✓ DMX Control (addressable to any channel)
- ✓ M10 threaded mounting holes on top and rear
- ✓ Safety bond connection
- ✓ Optional wall mount bracket
- ✓ Dimensions: 85 (H) x 240 (W) x 315mm (D)
- ✓ Weight: 3.5Kg / 8.0lb



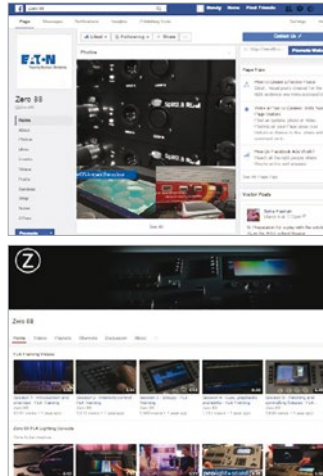
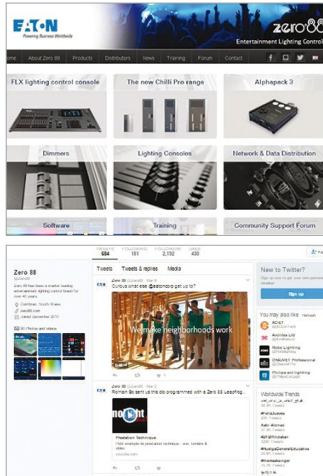
A compact three channel, overcurrent protected, DMX controlled dimmer that can be used virtually anywhere: from stand alone table top solution to truss mounted as part of a distributed lighting system - Alphapack 3 is ideal wherever you need a few dimming channels with a minimum of fuss.

Alphapack 3 is a three channel portable dimmer unit, which can be safely secured to a vertical or horizontal bar by adding a standard clamp onto one of two new m10 mounting positions, or attached to a wall with the use of an additional mounting bracket (sold separately). The Alphapack 3 finds uses in all areas of the lighting industry including rental, display, education, event services and live music users.

The local fader controls make the Alphapack 3 ideal for 'fit and forget' situations, as well as allowing use as a follow spot dimmer. A unique safety system and overload protection circuit means that it is an extremely safe and reliable solution to small dimming applications - never allowing the dimmer loads to draw more current than is available from the supply.



Services & Support



Zero 88 on the Web

The Zero 88 website, zero88.com, includes general information about our products, our distributors, latest news and contact information.

Available in both English and German, you can find product downloads, software updates and information regarding the latest training courses available.

Support Forum

The website is also the home of our Community Support Forum, enabling Zero 88 staff, distributors and customers to help each other and access & share information effectively.

Visitors can keep up to date with software releases, request new features, enquire about product selection or usage and keep in touch with other users. You can also provide software feedback here and contribute to the development of new and future software releases.

zero88.com/forum

Product Support Centre

This area provides a library of information for all our products; past and present. It includes downloadable product information including datasheets and manuals.

support.zero88.com

Pictures Courtesy of:

Pixaby · Kwaku Kyei · Hashtag Lightie · Nick Taylor Photography · Bakewell Bake Off · Loren Kathryn Payne Photography · Dreamstime · Sincerely Yours · Michael Pitts Photography · Nexos Lighting Technology · Kühl-Beschallung Ritterhude · Ines Heiko Beckmann Schmidt · Congress Theatre · Michael Brenkley Lighting Designer ·

Free Product Training

Regular training courses are provided in our Cwmbrian headquarters and near our Watford Office. Courses are free and include a light lunch. See zero88.com/training for availability and to book your place.

On-site Product Training

On-site training can be organised for all our current and legacy products. Contact us for more information and pricing.

European and Worldwide Training

Training can be provided worldwide – contact your local regional Sales Manager or Zero 88 distributor for further information.

Social Media

Zero 88 can also be found on Facebook, Twitter and YouTube. These sites are updated regularly with news, training and product usage tips as well as general information on what the Zero 88 team are doing.

Facebook

Like us on Facebook to keep up to date with the Zero 88 team and to find out about events and product updates through your news feed.

facebook.com/zero88.

Twitter

Follow Zero 88 on twitter for instant access to our support team when you need them.

twitter.com/zero88

YouTube

Subscribe to our YouTube channel for training videos and product demos.

youtube.com/zero88

Eaton's electrical business is a global leader with expertise in power distribution and circuit protection; backup power protection; control and automation; lighting and security; structural solutions and wiring devices; solutions for harsh and hazardous environments; and engineering services. Eaton is positioned through its global solutions to answer today's most critical electrical power management challenges.

Eaton is a power management company with 2017 sales of \$20.4 billion. Eaton provides energy-efficient solutions that help our customers effectively manage electrical, hydraulic and mechanical power more efficiently, safely and sustainably. Eaton has approximately 96,000 employees and sells products to customers in more than 175 countries. For more information, visit www.eaton.com.

Contact your local Eaton office

T: +44 (0)1923 495495 F: +44 (0)1633 867880
E: enquiries@zero88.com www.zero88.com

Eaton Lighting Systems

Usk House, Lakeside,
Llantarnam Park,
Cwmbran, Torfaen, NP44 3HD. UK
eatonlightingsystems.com

© 2019 Eaton
All Rights Reserved

Stock Number: 73-992-00 Issue: 25.0

Changes to the products, to the information contained in this document, and to prices are reserved; so are errors and omissions.

Eaton is a registered trademark.

All other trademarks are property of their respective owners.